

RESEARCH ARTICLE

An attempt to select non-genetic variation in resistance to starvation and reduced chill coma recovery time in *Drosophila melanogaster*

Bianca F. Menezes¹, Judit Salces-Ortiz¹, Heloïse Muller¹, Nelly Burlet¹, Sonia Martinez¹, Marie Fablet¹ and Cristina Vieira^{1,2,*}

ABSTRACT

Phenotypic variance is attributed to genetic and non-genetic factors, and only the former are presumed to be inherited and thus suitable for the action of selection. Although increasing amounts of data suggest that non-genetic variability may be inherited, we have limited empirical data in animals. Here, we performed an artificial selection experiment using *Drosophila melanogaster* inbred lines. We quantified the response to selection for a decrease in chill coma recovery time and an increase in starvation resistance. We observed a weak response to selection in the inbred and outbred lines, with variability across lines. At the end of the selection process, differential expression was detected for some genes associated with epigenetics, the piRNA pathway and canalization functions. As the selection process can disturb the canalization process and increase the phenotypic variance of developmental traits, we also investigated possible effects of the selection process on the number of scutellar bristles, fluctuating asymmetry levels and fitness estimates. These results suggest that, contrary to what was shown in plants, selection of non-genetic variability is not straightforward in *Drosophila* and appears to be strongly genotype dependent.

KEY WORDS: Environmental effects, Selection, Stress, Phenotypic variation, Inheritance

INTRODUCTION

Phenotypic variance observed in quantitative traits is classically additively split into genetic (G), environmental (E) and G by E (G×E) interaction components. Among these, only the additive contribution to genetic variance is transmitted to the next generation. Non-genetic inheritance is suggested to explain part of the phenotypic variance that is observed in nature (Salinas et al., 2013). Epigenetic marks play an important role in this non-genetic inheritance as DNA methylation patterns or chromatin conformation can be transmitted across generations (Herman and Sultan, 2016). In addition, it is becoming clear that maternally or paternally transmitted small RNAs can play an important role in the maintenance of gene expression patterns (Watanabe et al., 2011; Conine et al., 2013; Holoch and Moazed, 2015). Moreover, microbes may also participate in non-genetic inheritance, often

exhibiting vertical transmission and affecting host gene expression (Vastenhouw et al., 2006).

While it is clear that non-genetic inheritance contributes to phenotypes, despite some attempts, it has remained difficult to quantify this contribution. For example, the part of phenotypic variation that can be explained by changes in DNA methylation was estimated using epiRILs (epigenetic recombinant inbred lines) in *Arabidopsis thaliana* (Johannes et al., 2009; Zhang et al., 2013; Cortijo et al., 2014). The authors showed that a significant percentage of variance can be explained by the epialleles. Using the same epiRILs, the non-genetic heritability of several traits (such as leaf area or flowering time) was estimated to be low but significant (Zhang et al., 2013; Kooke et al., 2015). Epialleles were thus demonstrated to play a part in the evolution of the organisms (Zhang et al., 2013; Kooke et al., 2015). No equivalent experiments have been done in animals, including in *Drosophila*.

With this work, we intended to test the hypothesis that non-genetic inheritance can play a part in phenotype and that it can be selected. If this is the case, it will provide us with new mechanisms to understand how species adapt to different environments. To test this hypothesis, we performed artificial selection experiments on *Drosophila melanogaster* inbred lines, which harbour low levels of genetic variability. *Drosophila melanogaster* is one of the best studied model organisms in quantitative genetics, and a great number of selection experiments have been performed for a large number of traits (Harshman and Hoffmann, 2000). Here, we selected for a decrease in chill coma recovery time (CCRT) and an increase in starvation resistance (as survival time, ST). Indeed, CCRT and ST are often recorded as displaying high levels of heritability (Ayrinhac et al., 2004; Hoffmann et al., 2005), and the underlying mechanisms are starting to be elucidated (Slocumb et al., 2015; Hardy et al., 2018). If non-genetic inheritance is not transmitted to the next generation, the selection procedure should fail. Because the selection procedure can be considered a stress condition, we estimated developmental instability using bristle number and fluctuating asymmetry measures, which can indicate a break of the canalization process. We also measured the expression of candidate genes known to be involved in the stress response, such as *Hsp*, and genes implicated in the epigenetic pathways involved in transposable element (TE) silencing.

As previously shown in other organisms, we found that response to selection was strongly genotype dependent (Groot et al., 2017; Herman and Sultan, 2016). However, and contrary to what has been shown in plants (Cortijo et al., 2014), the extent of the response to selection was weak in our *D. melanogaster* lines. It was previously shown that morphological and fitness alterations can occur through the selection process and remain after selection relaxation in *Drosophila* (Rutherford and Lindquist, 1998; Sollars et al., 2003).

¹Laboratoire de Biométrie et Biologie Evolutive, Université Claude Bernard Lyon I, Université de Lyon, CNRS, UMR5558, 69622 Villeurbanne, France. ²Institut Universitaire de France, 75231 Paris cedex 05, France.

*Author for correspondence (cristina.vieira@univ-lyon1.fr)

 C.V., 0000-0003-3414-3993

This was not an obvious result in our experiment. However, we did detect expression changes for some genes following the selection process, such as *thor*, *Hsp27* and *ago3*.

MATERIALS AND METHODS

Drosophila melanogaster lines

Samples of natural populations of *D. melanogaster* were collected from a single population at Gotheron, France (44°56'0"N, 04°53'30"E) in June 2014 using fruit bait. Thirty isofemale lines were established directly from gravid females from the field. Brother–sister matings were subsequently performed for 30 generations, resulting in 30 inbred lines, which are thought to harbour very low intra-line genetic variability (Falconer and Mackay, 1996). We randomly chose three of these lines to continue with the experiments, denominated 6.6, 10.1 and 15.4. An outbred line was built from one virgin pair sampled from each of the 30 isofemale lines. The progeny arising from these flies constituted generation 0. This outcome provided a control line displaying initial genetic variability, which we expected to respond to selection. Indeed, this initial genetic pool was made of a variety of alleles, either favourable or unfavourable to starvation resistance or chill coma recovery time. The selection process applied on this outbred line allowed the removal of unfavourable alleles, and therefore made the genetic pool evolve in the intended direction. As inbred lines display non-genetic variability, whereas the outbred line displays both genetic and non-genetic variability, response to selection was expected to be stronger in the outbred line than in the other lines. Flies were maintained in the laboratory at 24°C in a standardized culture medium for *Drosophila*.

Chill coma and starvation assays CCRT

We only considered 2–5 day old flies, as previous studies found that CCRT depended on age (David et al., 1998). Flies were first sexed on ice within a 5°C chamber, and 50 females were then transferred into empty plaques (one female per well) and placed in chambers containing melting ice. After 16 h, individuals were promptly removed from cold to room temperature (24°C), and CCRT was measured individually by recording the time until the fly could stand on its legs (Gibert et al., 2001).

ST

Flies were put into starvation vials (1.5% agar medium) with no nutritional value, only allowing the flies to obtain ingestible moisture (Bubliy and Loeschcke, 2005; Harshman et al., 1999; MacMillan et al., 2009). The 2–5 day old females were sampled using an insect aspirator, without anaesthesia. Five tubes were established, each containing 10 females and kept at 25°C with 70% relative humidity. The number of dead flies was recorded three times per day.

Selection experiments

Artificial selection was applied during 10 generations, without relaxation, on samples of 50 females.

For CCRT decrease, a selection pressure of 20% was applied, i.e. the first 10 recovering females were used as the breeders for the next generation. Ten other pairs were randomly selected from a pool of flies to make up the control lines. Each selected line had its own control, maintained in the same conditions (temperature, density and culture medium), except that it was subjected to neither chill nor starvation, with the aim of minimizing the effects of microenvironmental variations. Individuals that took longer than 120 min to recover from chill coma were excluded from the analysis.

For starvation resistance, approximately 50% of surviving females (L50) from the five replicates were used to make the subsequent generation. As selection was performed only on females, at each generation, males were randomly taken from the pool of males in the same numbers as females. After each treatment, flies were placed into vials containing fresh food and survival was measured 24 h later. All control lines were kept with the same number of flies as the selected lines at each generation. Thus, we ensured that density was not a variable to be considered in the analyses.

Morphological alterations and fitness estimates

All measures were recorded 10 generations after the end of the selection process; that is, at generation 20. Thirty females per line were analysed, for a total of 480 individuals. All visible morphological alterations (deformed body parts) were recorded (Table S1). We also recorded the number of scutellar bristles (SCT), which is considered a strongly canalized trait (Rendel, 1959; Sgrò et al., 2010). Indeed, changes in SCT number would be reflective of alterations of canalization.

Fluctuating asymmetry (FA) analyses

We counted the number of sternopleural bristles from both the left and right sides of individual flies, and estimated FA as the absolute value of their difference (Van Valen, 1962; Palmer and Strobeck, 1986).

Fitness estimates

Twenty 2–4 day old mated females were placed into four vials (five flies per tube) to lay eggs for 48 h, and then placed into new vials for 48 h. Vials were maintained at 24°C in a standardized culture medium. Hatching adults were counted daily for 8 days. We used the total number of adults in the progeny as a proxy for the fitness of the line.

Isolation of RNA and quantification of transcripts by quantitative PCR

We chose to work on ovaries because it is the female tissue that is most closely related to trans-generational transmission. Pools of 70 pairs of ovaries from 2–5 day old mated females were dissected in 1% PBS and split into three biological replicates. Total RNA was extracted using the RNeasy kit (Qiagen) plus QIAzol Lysis Reagent and subsequently treated with DNase (DNA-free kit; Ambion); 1 µg of total RNA was then converted into cDNA using Superscript III reverse transcriptase (Invitrogen) primed with oligo(dT)₂₀.

cDNAs were 50-fold diluted and then quantified using SYBR green quantitative PCR (qPCR) in a LightCycler apparatus (Roche Diagnostics). We chose genes that have been shown to be implicated in the canalization process and stress response [*Hsp26*, *Hsp27*, *Hsp68*, *Hsp83*, *technical knockout (tko)*] and in epigenetic regulation [*argonaute 3 (ago3)*, *piwi*, *zucchini (zuc)*, *vasa (vas)*, *thor*, *Methyltransferase 2 (dnmt2)*, *Suppressor of variegation 3-9 (suvar3-9)*, *modifier of mdg4 (modmdg4)*, *oskar (osk)*, *Helicase at 25E (Hel25E)*], and the *412 TE*. All these genes are expressed in the ovaries. We tested three genes for use as normalization genes: *Ribosomal protein L32 (rp49)*, *18S rRNA (18S)* and *tubuline (tub)*. As *rp49* had the lowest coefficient of variation across samples, we normalized the whole dataset by *rp49* levels. Three biological replicates were obtained for each condition, and reactions were performed in triplicate. Standard curves were calculated using serial dilutions of the cDNAs. An efficiency value between 1.8 and 2.0 was maintained. For each gene, standard curves were used to convert Ct values into absolute concentrations, which were

subsequently divided by *rp49* absolute concentrations in each sample. Primer sequences are given in Table S2.

Intra-line nucleotide diversity

To measure intra-line nucleotide diversity, we focused on one intron of the *Adh* gene. This gene is particularly well studied in *Drosophila* for diversity measures (McDonald and Kreitman, 1991). Working on the intronic sequence gave us access to neutral diversity. We performed individual DNA extractions on five females per line using the NucleoSpin 96 Tissue Kit (Macherey Nagel, Düren, Germany) following the manufacturer's instructions. We PCR amplified a 453 bp region in the first intron of the *Adh* gene (FBgn0000055) (see Table S2 for primer sequences). PCR products were directly sequenced using the Sanger procedure.

Statistical analyses

Estimates of the realized heritability for both traits were computed for each line by regression of the cumulative selection response (as a deviation from the control) on the cumulative selection differential based on the data from generation 0 to 10 (Falconer and Mackay, 1996). Because the resulting selected lines were derived from inbred lines with different genetic backgrounds, we computed heritability estimates for each line separately.

All statistical analyses were performed using R. Data were analysed using mixed models with line as a random effect. Models were implemented in R using the *lmer* function of the *lme4* package.

ST

At each generation during the 10 generations of selection, we recorded the survival time of the first three dead flies in each vial. We could not wait until longevity was recorded to choose individuals that gave birth to the next generation, so we decided to make measurements on the same number of flies for each line to limit bias. We assessed the significance of the selection effect by comparing the null model [*survival_time*~(1|line)] with the complete model [*survival_time*~generation+(1|line)] (likelihood ratio test, d.f.=1). Next, we analysed intra-line behaviours using linear models (*survival_time*~generation). The strength of the selection effect was estimated by the corresponding slope.

CCRT

We recorded CCRT from generation 1 to 10 for the selected lines. Contrary to our expectations, CCRT increased instead of decreasing. Therefore, we started to record CCRT in control lines from generation 6, and, for unknown reasons, we noticed that CCRT also increased in control lines. To test the existence of a response to selection, we only used data obtained from generations 6 to 10, assessing the significance of the treatment by generation interaction by comparing the complete model [*recovery_time*~treatment×generation+(generation|line)] with the model without an interaction term [*recovery_time*~treatment+generation+(generation|line)] (likelihood ratio test, d.f.=1). A negative interaction term for the selection treatment is expected if recovery time increases less in the selection condition compared with the control. We also analysed intra-line behaviours using linear models (*recovery_time*~treatment×generation). The effect of the treatment by generation interaction corresponds to the difference between the respective slopes for the selection and control treatments.

Gene expression levels

We assessed the significance of the selection effect by comparing the null model [*expression*~(1|line)] with the complete model

[*expression*~treatment+(1|line)] (likelihood ratio test, d.f.=1). The corresponding *P*-values are provided in Fig. 3. We determined per-line global patterns of variation between selection and control conditions using paired Wilcoxon tests on gene results.

FA and fitness

We assessed the significance of a global effect of the selection procedure by comparing the null model <FA or fitness>~(1|line) with the complete model <FA or fitness>~treatment+(1|line) (likelihood ratio test, d.f.=1). At the intra-line level, we compared the selection and control treatments using *t*-tests for FA and Wilcoxon tests for fitness estimates.

RESULTS

Response to selection

We used three inbred lines of *D. melanogaster* and one outbred line to test for selection response in two traits: reduced CCRT and starvation resistance (2759 and 3881 flies analysed, respectively). We used the outbred line as a positive control for response to selection as it is known that the traits of interest display a genetic basis (Falconer and Mackay, 1996). As inbred lines display non-genetic variability, whereas the outbred line displays both genetic and non-genetic variability, response to selection was expected to be stronger in the outbred line than in the other lines.

Globally, we found weak, although significant, responses to our selection protocols. In the starvation assay, survival time significantly increased over time ($\chi^2=15.5$, $P=8\times 10^{-5}$; generation effect=0.44). In the CCRT assay, the generation by treatment interaction was significant ($\chi^2=30.5$, $P=3\times 10^{-8}$), with a negative effect (−2.5) due to selection, indicative of a relative shortening of recovery time along generations. However, in both selection experiments, we noticed a high inter-line variability, which we describe in more detail below.

As expected, the strongest response to selection for starvation resistance was observed for the outbred line (slope=1.09, $P=2\times 10^{-4}$) (Fig. 1A). Line 10.1 also responded to selection (slope=0.63, $P=0.003$). However, no significant response to selection could be detected in lines 6.6 (slope=−0.07, $P=0.75$) and 15.4 (slope=0.10, $P=0.48$).

We observed that CCRT increased significantly less across generations in the selected line than in the control for the outbred line and 10.1 (slope difference=−2.89, $P=1\times 10^{-6}$ and slope difference=−5.78, $P<10^{-7}$, respectively). The effect was not significant for line 15.4 (slope difference=0.42, $P=0.62$). Missing data in line 6.6 prevented us from comparing slopes regarding the same generations (Fig. 1B). We also noticed a high variability of the response across and within generations. Such oscillations are frequently observed in experimental selection protocols (Falconer and Mackay, 1996).

Strikingly, we noticed an absolute decrease of CCRT only in the selected outbred line. For both traits (ST and CCRT), we noticed that the outbred line displayed a strong response to selection, as expected. Inbred line 10.1 also showed some response to both selection processes. In contrast, line 15.4 did not significantly respond to selection for either of the traits. Line 6.6 was insensitive to starvation resistance selection. This illustrates the strong line effect in response to selection in inbred lines.

Realized heritability estimates

Broad heritability values of cumulative realized heritability (ΣR) for CCRT and ST were estimated per line (Table 1).

As expected, the outbred line presented the highest heritability estimates (0.20 for CCRT and 0.16 for ST). The heritability

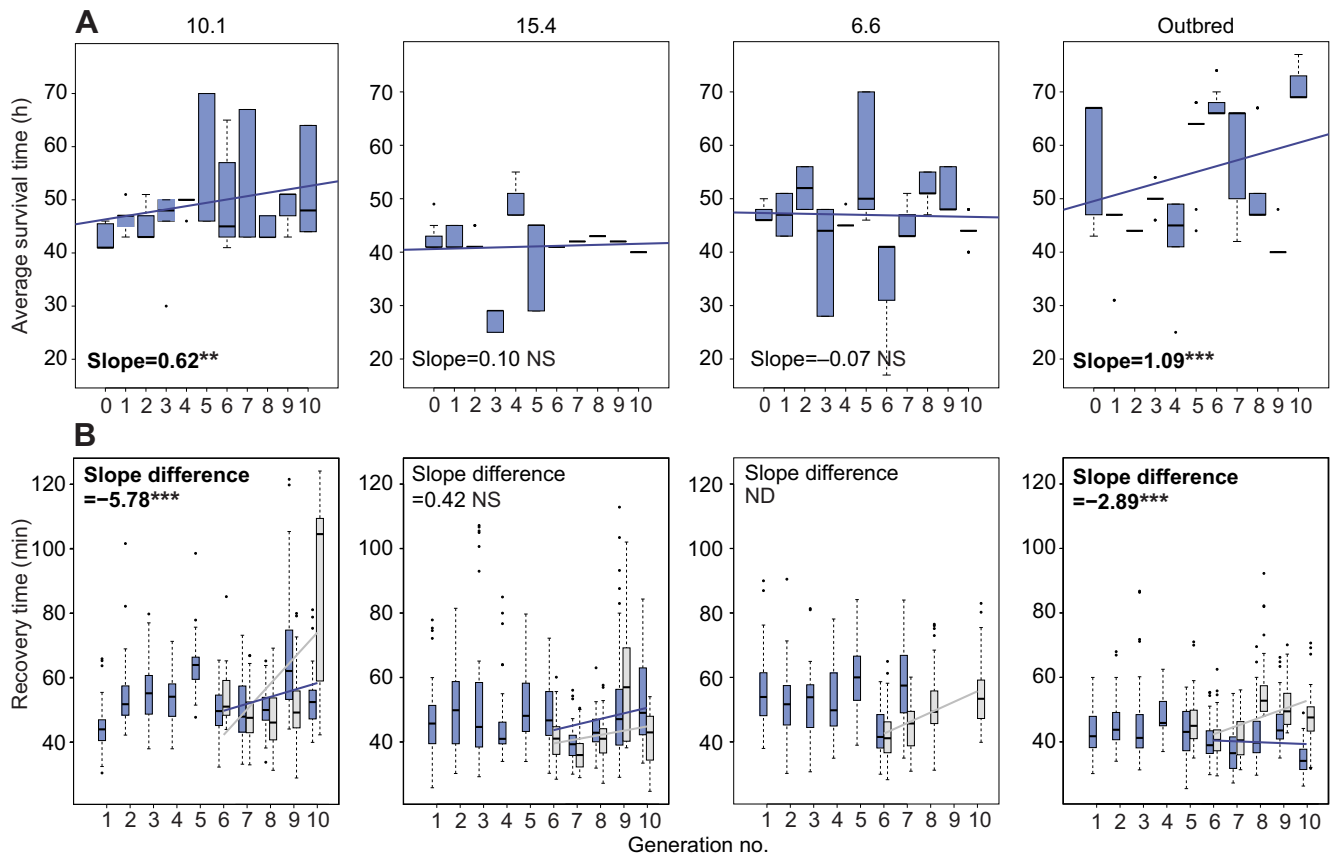


Fig. 1. Phenotypic response to selection for starvation resistance and chill coma recovery time (CCRT). (A) Starvation resistance, measured as survival time (ST). (B) CCRT decrease. Blue: selected lines; grey: controls. Strain is given above the panels. ** $P < 0.01$; *** $P < 0.001$.

estimates for CCRT and ST were low and consistent with those estimated for most physiological or behavioural traits in outbred populations (Mousseau and Roff, 1987; Roff, 1997).

Morphological alterations and fitness estimates

We analysed 30 females per line in both selection experiments and recorded the number of flies with visible morphological alterations (including deformed scutellar bristles). We did not detect any increase in the number of aberrant phenotypes in selected lines compared with control lines (Fisher's exact tests; Table S3). We also recorded the number of scutellar bristles and considered as an aberrant phenotype any number different from four. We did not detect any increase in the number of aberrant scutellar bristles following the selection process, except in the case of line 6.6 for CCRT selection (Fisher's exact tests; Table S3).

We could not detect any effect of selection on FA using the complete dataset (CCRT assay: $\chi^2 = 0.99$, $P = 0.319$; ST assay:

$\chi^2 = 1.12$, $P = 0.291$). However, at the intra-line level, we detected a significant increase in FA of sternopleural bristle numbers for line 6.6 for both selection experiments (t -tests; CCRT: $P = 0.036$; ST: $P = 0.031$) (Fig. 2).

Fitness was not altered after the selection experiments (CCRT assay: $\chi^2 = 1.18$, $P = 0.278$; ST assay: $\chi^2 = 0.02$, $P = 0.890$), except for a significant decrease in line 6.6 selected for reduced CCRT (Wilcoxon test, $P = 0.03$; Fig. 2B) and in line 15.4 selected for ST resistance (Wilcoxon test, $P = 0.03$) (Fig. 2A).

Expression level analysis

We quantified gene expression for a set of genes that could be involved in response to selection, genome stability or both. Our set included genes associated with stress, epigenetics and the Piwi-interacting RNA (piRNA) pathway. These genes were chosen because a previous experiment showed that their expression levels were modified after chill coma and starvation stress in *D. melanogaster* and *Drosophila simulans* species (B.F.M., J.S.-O., M.F. and C.V., unpublished data). Colinet et al. (2010) also showed an increase in the expression *Hsp27* and other *Hsp* genes after a cold shock. We found that the selection process had an effect on the expression levels of some genes: *thor* in the CCRT assay ($P = 0.025$), and *thor* ($P = 0.007$), *Hsp27* ($P = 0.017$), *modmdg4* ($P = 0.029$) and *ago3* ($P = 0.016$) in the starvation assay (Fig. 3). Additionally, line 6.6 showed a significant global decrease in gene expression levels for cold treatment (Wilcoxon signed-rank test, $V = 135$, $P < 10^{-4}$), while line 10.1 and the outbred line showed an overall upregulation (Wilcoxon signed-rank tests, $V = 16$, $P = 0.005$, and $V = 12$, $P = 0.002$, respectively).

Table 1. Realized heritability estimates

Line	Trait	ΣR (\pm s.d.)
6.6	CCRT	0.069 \pm 0.043 NS
	ST	0.034 \pm 0.024 NS
10.1	CCRT	0.092 \pm 0.018**
	ST	0.132 \pm 0.045**
15.4	CCRT	0.079 \pm 0.029*
	ST	0.073 \pm 0.009 NS
Outbred	CCRT	0.199 \pm 0.043***
	ST	0.157 \pm 0.021***

ΣR is the mean obtained from the cumulative selection response. * $P < 0.05$, ** $P < 0.01$, *** $P < 0.001$; NS, not significant.

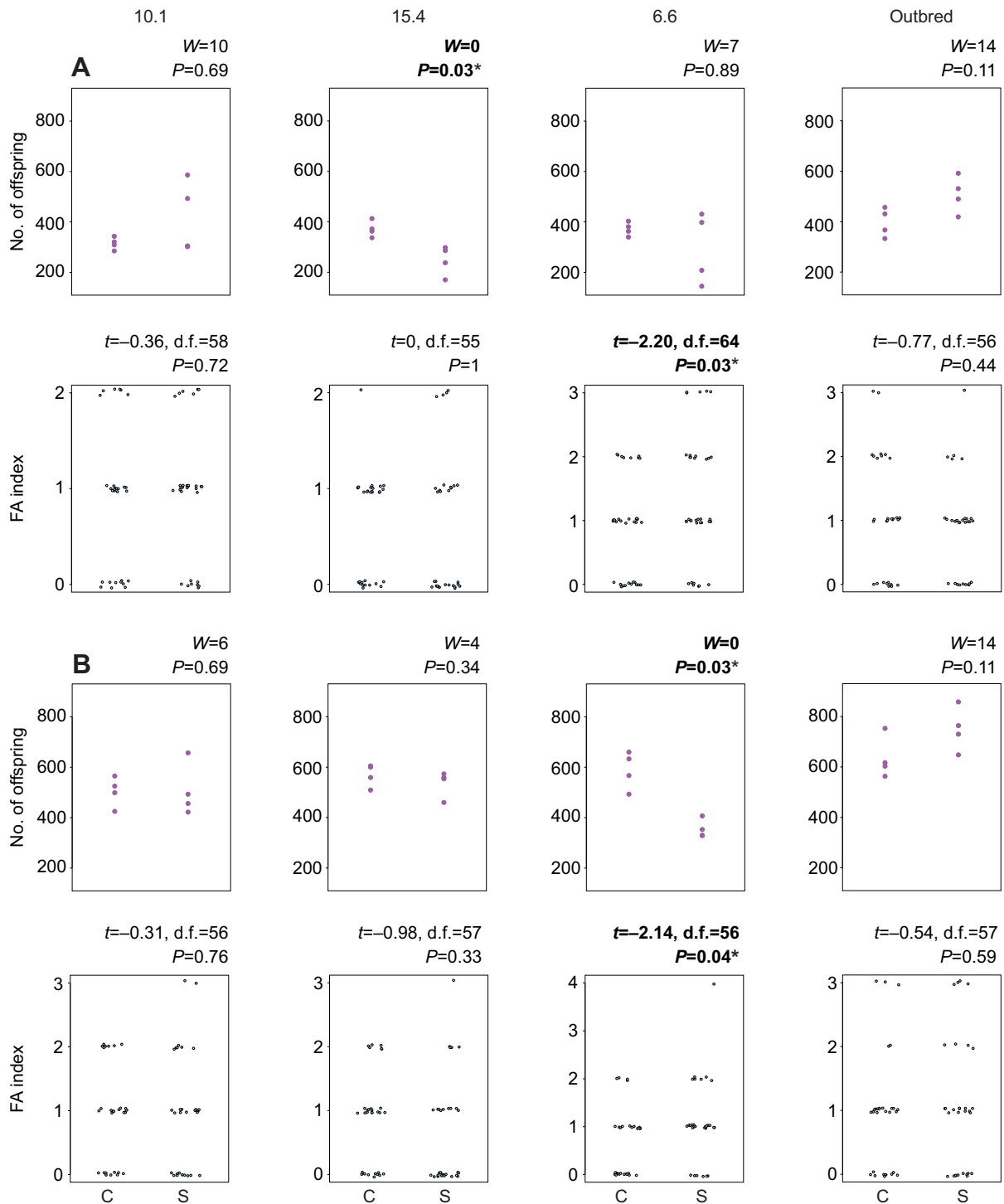


Fig. 2. Fitness estimates and fluctuating asymmetry (FA) index for ST and CCRT decrease. Number of offspring and FA index for (A) ST and (B) CCRT decrease. C, control; S, selection. Strain is given above the panels. * $P<0.05$.

Intra-line genetic diversity

We sequenced a portion of the first intron of the *Adh* gene to assess genetic diversity within lines. All sequences retrieved from line 6.6 (16 sequences) and line 15.4 (15 sequences) were 100% identical. Among the sequences retrieved from line 10.1 (17 sequences), we found two variants that differed by five single-nucleotide polymorphisms (SNPs) and a short indel. Among the sequences retrieved from the outbred line, only eight were analysable because of a high proportion of heterozygotes, and these matched the same

two variants as recorded in line 10.1. Such genetic diversity is expected in the outbred line.

DISCUSSION

Response to selection is moderate in *Drosophila* inbred lines

In this study, we performed artificial selection experiments on inbred lines of *D. melanogaster* to affect resistance to chill exposure and nutrient restriction. In the absence of genetic variation, we expected selection to be inefficient, unless non-genetic variability can also be

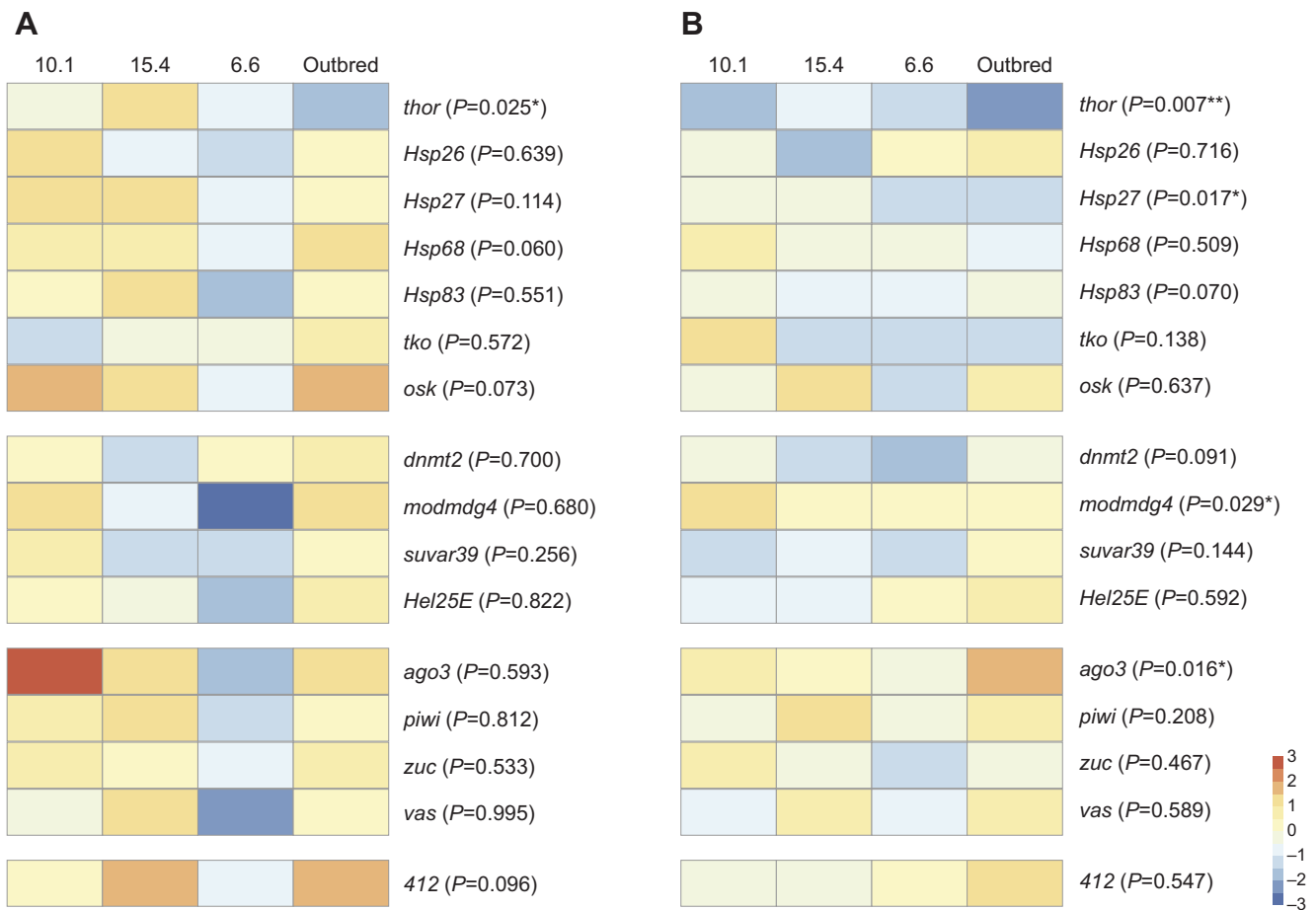


Fig. 3. Relative expression levels of selected lines compared with controls (\log_2 -fold changes). (A) CCRT. (B) ST. Genes are grouped based on their major functions [from top to bottom: response to stress, epigenetics, Piwi-interacting RNA (piRNA) pathway and TE, respectively]. Strain is given above the panels. *P*-values were obtained from significance tests of the selection effect (see Materials and Methods). See Table S4 for expression levels.

inherited. As far as we know, this is the first study of selection on traits performed on inbred lines of insects of a natural origin. Apart from this study, and using *D. melanogaster* transgenic lines, Ciabrelli et al. (2017) recently successfully performed divergent selection for eye colour determined by alternative epialleles, as defined by differential levels of H3K27me3 on a mini-white construct.

We observed responses to selection only in lines for which we cannot exclude genetic variation. This prevents us from concluding that we managed to select non-genetic variation. As expected, the response to selection was more intense in the case of the outbred line than in any one of the inbred lines. Heritability estimates were low and consistent with those estimated for most physiological or behavioural traits in natural populations (Mousseau and Roff, 1987; Scheiner and Callahan, 1999; Scheiner et al., 2000; Gerken et al., 2016). Such low estimates were expected in inbred lines.

We established that the selection processes had an effect on gene expression for some genes involved in the stress response, epigenetics and TE control. It has already been shown that direct and indirect responses to selection can affect several sets of genes with different pleiotropic effects (Mackay, 2014). In the present study, we detected upregulation of *modmdg4* and *ago3* in the CCRT assay, downregulation of *thor* in both assays, and downregulation of *Hsp27* in the starvation assay.

The response to selection is line dependent

We noticed variability across lines in the intensity of the response to selection, which we propose is partly related to the extent and

nature of the epigenetic variability specific to each line. Such line variability was also observed regarding gene expression measures: the selection process induced changes in expression profiles; however, these changes were line dependent, as expected for independent inbred lines (England et al., 2003).

In addition, we noticed a large variability of responses across and within generations (Fig. 2). Such oscillations are frequently observed in experimental selection protocols and are particularly observed in populations with low genetic load (Falconer and Mackay, 1996), which is probably not the case for the inbred lines. Morgante et al. (2015) showed that a large phenotypic plasticity existed within lines from a natural population of *D. melanogaster*, which they called micro-environmental plasticity. Our data suggest that such within-line variability exists, which could be due to variability in the non-genetic component of phenotypic plasticity, but we cannot exclude residual genetic variability. Indeed, despite a large number of sibling mating crosses, inbred lines probably carry residual polymorphism. Ciabrelli et al. (2017) performed deep-sequencing of the genomes of their inbred lines and reported hundreds of thousands of polymorphisms in each line. However, based on sequence analyses, they claim that these differences do not account for the observed phenotypic differences. Here, the data that we have on a limited genetic loci suggest that genetic variability may be somehow higher for line 10.1 than for lines 6.6 and 15.4. Thus, we cannot exclude the possibility that the larger response to selection observed in 10.1

compared with the other inbred lines is related to a higher level of residual genetic variability.

Implications for fitness and buffering mechanisms

Several studies have described stress-induced variation through natural and artificial selection (Badyaev, 2005), but very few have suggested that artificial selection could be considered a stress (see Belyaev, 1979; Belyaev et al., 1985; Trut, 1999, for selection on tame behaviour in the silver fox). In ongoing work in our group, we observed that selection experiments in *Drosophila* populations presented occurrences of aberrant phenotypes, significant FA index and alterations of canalized traits such as the number of scutellar bristles (B.F.M., unpublished data). Therefore, artificial selection may lead to fitness decreases and impairment of buffering mechanisms. We suspect alteration in the buffering mechanism following the selection protocol only in strains 6.6 and 15.4. In line 6.6, both selection procedures led to an increase in the number of aberrant scutellar bristles, an increase in FA levels and a decrease in fitness. The fitness of line 15.4 decreased following starvation selection. No morphological alterations were detected for both 10.1 and the outbred line. One possible explanation is that the potential of response to selection, regardless of its mechanism, did not reach its plateau for both traits. Therefore, the environmental perturbations applied did not overcome the buffering mechanisms, while the cryptic genetic variation revealed by strain 6.6 indicates a possible rupture in some canalization processes (Dworkin, 2005).

Indeed, we noticed that lines displaying the weakest response to selection were also those that had impaired buffering mechanisms and fitness decreases. This was mostly line 6.6 but also line 15.4 to a more limited extent. In contrast, line 10.1 responded to selection and showed no buffering impairment nor fitness decrease. In addition, line 6.6 displayed an overall decrease in the expression levels of most studied genes following the selection process, while line 10.1 mostly upregulated the studied genes. Together, all these elements may indicate that line 6.6 is unable to trigger stress response pathways, which results in an inability to respond to selection and deleterious buffering impairments. These data should be considered as possible clues, as we did not measure the expression of genes – namely, stress response genes – after a stress stimulus.

Conclusion

We hypothesized that selection could act upon non-genetic inheritance (e.g. upon an epigenetic methylation pattern or a chromatin structure), which introduces a conceptual similarity between non-genetic and genetic inheritance. Non-genetic variability could arise randomly (e.g. as an epimutation) and subsequently be exposed to selection so that it follows similar dynamics to those of ordinary genetic variants. Many studies address questions about the prevalence of non-genetic effects in natural conditions and their inheritance mechanisms, such as epigenetics (Cubas et al., 1999; Vaughn et al., 2007; Bossdorf et al., 2008; Bossdorf and Zhang, 2011; Zhang et al., 2013; Cortijo et al., 2014; Tricker, 2015; Heard and Martienssen, 2014; Ciabrelli et al., 2017). Contrary to what is known from plants, our results demonstrate that selection of non-genetic variation is not straightforward in *Drosophila*. One inbred line showed a response to starvation selection, but this line appears to have residual standing genetic variation. We observed a line-dependent weak response to selection, accompanied by some changes in gene expression and buffering mechanisms. For example, the expression level of *ago3*, a gene involved in TE silencing through the piRNA pathway, was affected by the selection process. We speculate that these differences were maintained after the release of selection, which would indicate a

transmission across generations. The transmission of epigenetic marks could explain the final phenotype after selection.

We note that, to accurately disentangle genetic from non-genetic compounds on the phenotypes of lines subjected to selection, we must be able to strictly control genetic variance. As seen with our data, this approach is nearly impossible. In future experiments, a knowledge of the genomic sequences before and after selection will be fundamental. With this work, we hope to provide some clues on the difficulties of clearly demonstrating the ability to select for non-genetic variability. The current advances in high throughput sequencing should help us to delve further into these issues.

Acknowledgements

We thank E. Desouhant, I. Amat and P. Gibert for helpful discussion.

Competing interests

The authors declare no competing or financial interests.

Author contributions

Conceptualization: M.F., C.V.; Methodology: B.F.M., J.S.-O., M.F.; Validation: H.M., N.B., S.M.; Formal analysis: S.M., M.F.; Investigation: B.F.M., J.S.-O., H.M., N.B., M.F.; Writing - original draft: B.F.M., C.V.; Writing - review & editing: C.V.; Supervision: M.F., C.V.; Project administration: C.V.; Funding acquisition: C.V.

Funding

This work was supported by Agence Nationale de la Recherche (grant Exhyb ANR-14-CE19-0016-01 to C.V.), Centre National de la Recherche Scientifique, Institut Universitaire de France (grant to C.V.), the Fondation pour la Recherche Médicale (DEP20131128536) and Conselho Nacional de Desenvolvimento Científico e Tecnológico (grant 203548/2014-0) to B.F.M.

Supplementary information

Supplementary information available online at <http://jeb.biologists.org/lookup/doi/10.1242/jeb.186254.supplemental>

References

- Ayrinhac, A., Debat, V., Gibert, P., Kister, A.-G., Legout, H., Moreteau, B., Vergilino, R. and David, J. R. (2004). Cold adaptation in geographical populations of *Drosophila melanogaster*: phenotypic plasticity is more important than genetic variability. *Funct. Ecol.* **18**, 700-706.
- Badyaev, A. V. (2005). Stress-induced variation in evolution: from behavioural plasticity to genetic assimilation. *Proc. R. Soc. B* **272**, 877-886.
- Belyaev, D. K. (1979). Destabilizing selection as a factor in domestication. *J. Hered.* **70**, 301-308.
- Belyaev, D. K., Plyusnina, I. Z. and Trut, L. N. (1985). Domestication in the silver fox (*Vulpes fulvus* Desm): changes in physiological boundaries of the sensitive period of primary socialization. *Appl. Anim. Behav. Sci.* **13**, 359-370.
- Bossdorf, O. and Zhang, Y. (2011). A truly ecological epigenetics study. *Mol. Ecol.* **20**, 1572-1774.
- Bossdorf, O., Richards, C. L. and Pigliucci, M. (2008). Epigenetics for ecologists. *Ecol. Lett.* **11**, 106-115.
- Bubli, O. A. and Loeschcke, V. (2005). Correlated responses to selection for stress resistance and longevity in a laboratory population of *Drosophila melanogaster*. *J. Evol. Biol.* **18**, 789-803.
- Ciabrelli, F., Comoglio, F., Fellous, S., Bonev, B., Ninova, M., Szabo, Q., Xuéreb, A., Klopp, C., Aravin, A., Paro, R. et al. (2017). Stable Polycomb-dependent transgenerational inheritance of chromatin states in *Drosophila*. *Nat. Genet.* **49**, 876-886.
- Colinet, H., Lee, S. F. and Hoffman, A. A. (2010). Temporal expression of heat shock genes during cold stress and recovery from chill coma in adult *Drosophila melanogaster*. *FEBS J.* **277**, 174-185.
- Conine, C. C., Moresco, J. J., Gu, W., Shirayama, M., Conte, D., Jr, Yates, J. R., III and Mello, C. C. (2013). Argonautes promote male fertility and provide a paternal memory of germline gene expression in *C. elegans*. *Cell* **155**, 1532-1544.
- Cortijo, S., Wardenaar, R., Colomé-Tatché, M., Gilly, A., Etcheverry, M., Labadie, K., Caillieux, E., Hospital, F., Aury, J.-M., Wincker, P. et al. (2014). Mapping the epigenetic basis of complex traits. *Science* **343**, 1145-1148.
- Cubas, P., Vincent, C. and Coen, E. (1999). An epigenetic mutation responsible for natural variation in floral symmetry. *Nature* **401**, 157-161.
- David, R. J., Gibert, P., Pla, E., Petavy, G., Karan, D. and Moreteau, B. (1998). Cold stress tolerance in *Drosophila*: analysis of chill coma recovery in *D. melanogaster*. *J. Therm. Biol.* **23**, 291-299.

- Dworkin, I.** (2005). A study of canalization and developmental stability in the sternopleural bristle system of *Drosophila melanogaster*. *Evolution* **59**, 1500-1509.
- England, P. R., Osler, G. H. R., Woodworth, L. M., Montgomery, M. E., Briscoe, D. A. and Frankham, R.** (2003). Effects of intense versus diffuse population bottlenecks on microsatellite genetic diversity and evolutionary potential. *Conserv. Genet.* **4**, 595-604.
- Falconer, D. S. and Mackay, T. F. C.** (1996). *Introduction to Quantitative Genetics*, 4th edn. (Edinburgh: Longman Group Limited), pp. 158-171. Oxford, UK: Oxford University Press.
- Gerken, A. R., Mackay, T. F. C. and Morgan, T. J.** (2016). Artificial selection on chill-coma recovery time in *Drosophila melanogaster*: direct and correlated responses to selection. *J. Therm. Biol.* **59**, 77-85.
- Gibert, P., Moreteau, B., Pétavy, G., Karan, D. and David, J. R.** (2001). Chill-coma tolerance, a major climatic adaptation among *Drosophila* species. *Evolution* **55**, 1063-1068.
- Groot, M. P., Kubisch, A., Ouborg, N. J., Pagel, J., Schmid, K. J., Vergeer, P. and Lampel, C.** (2017). Transgenerational effects of mild heat in *Arabidopsis thaliana* show strong genotype specificity that is explained by climate at origin. *New Phytol.* **215**, 1221-1234.
- Hardy, C. M., Burke, M. K., Everett, L. J., Han, M. V., Lantz, K. M. and Gibbs, A. G.** (2018). Genome-wide analysis of starvation-selected *Drosophila melanogaster*-a genetic model of obesity. *Mol. Biol. Evol.* **35**, 50-65.
- Harshman, L. G. and Hoffmann, A. A.** (2000). Laboratory selection experiments using *Drosophila*: what do they really tell us? *Trends Ecol. Evol.* **15**, 32-36.
- Harshman, L. G., Hoffmann, A. A. and Clark, A. G.** (1999). Selection for starvation resistance in *Drosophila melanogaster*: physiological correlates, enzyme activities and multiple stress responses. *J. Evol. Biol.* **12**, 370-379.
- Heard, E. and Martienssen, R. A.** (2014). Transgenerational epigenetic inheritance: myths and mechanisms. *Cell* **157**, 95-109.
- Herman, J. J. and Sultan, S. E.** (2016). DNA methylation mediates genetic variation for adaptive transgenerational plasticity. *Proc. Biol. Sci.* **283**.
- Hoffmann, A. A., Shirriffs, J. and Scott, M.** (2005). Relative importance of plastic vs genetic factors in adaptive differentiation: geographical variation for stress resistance in *Drosophila melanogaster* from eastern Australia. *Funct. Ecol.* **19**, 222-227.
- Holoch, D. and Moazed, D.** (2015). RNA-mediated epigenetic regulation of gene expression. *Nat. Rev. Genet.* **16**, 71-84.
- Johannes, F., Porcher, E., Teixeira, F. K., Saliba-Colombani, V., Simon, M., Agier, N., A. Bulski, Albuissou, J., Heredia, F., Audigier, P. et al.** (2009). Assessing the impact of transgenerational epigenetic variation on complex traits. *PLoS Genet.* **5**.
- Kooke, R., Johannes, F., Wardenaar, R., Becker, F., Etcheverry, M., Colot, V., Vreugdenhil, D. and Keurentjes, J. J. B.** (2015). Epigenetic basis of morphological variation and phenotypic plasticity in *Arabidopsis thaliana*. *Plant Cell* **27**, 337-348.
- Mackay, T. F. C.** (2014). Epistasis and quantitative traits: using model organisms to study gene-gene interactions. *Nat. Rev. Genet.* **15**, 22-33.
- MacMillan, H. A., Walsh, J. P. and Sinclair, B. J.** (2009). The effects of selection for cold tolerance on cross-tolerance to other environmental stressors in *Drosophila melanogaster*. *J. Insect Sci.* **16**, 263-276.
- McDonald, J. H. and Kreitman, M.** (1991). Adaptive protein evolution at the Adh locus in *Drosophila*. *Nature* **351**, 652-654.
- Morgante, F., Sørensen, P., Sorensen, D. A., Maltecca, C. and Mackay, T. F. C.** (2015). Genetic architecture of microenvironmental plasticity in *Drosophila melanogaster*. *Sci. Rep.* **5**, 9785.
- Mousseau, T. A. and Roff, D. A.** (1987). Natural selection and the heritability of fitness components. *Heredity* **59**, 181-197.
- Palmer, A. R. and Strobeck, C.** (1986). Fluctuating asymmetry: measurement, analysis, patterns. *Annu. Rev. Ecol. Syst.* **17**, 391-421.
- Rendel, J. M.** (1959). Canalization of the scute phenotype of *Drosophila*. *Evolution* **13**, 425-439.
- Roff, D. A.** (1997). *Evolutionary Quantitative Genetics*. New York: Chapman and Hall. pp. 118-163.
- Rutherford, S. L. and Lindquist, S.** (1998). Hsp90 as a capacitor for morphological evolution. *Nature* **396**, 336-342.
- Salinas, S., Brown, S. C., Mangel, M. and Munch, S. B.** (2013). Non-genetic inheritance and changing environments. *Non-Genet. Inherit.* **1**, 38-50.
- Scheiner, S. M. and Callahan, H. S.** (1999). Measuring natural selection on phenotypic plasticity. *Evolution* **53**, 1704-1713.
- Scheiner, S. M., Mitchell, R. J. and Callahan, H. S.** (2000). Using path analysis to measure natural selection. *J. Evol. Biol.* **13**, 423-433.
- Sgrò, C. M., Wegener, B. and Hoffman, A. A.** (2010). A naturally occurring variant of *Hsp90* that is associated with decanalization. *Proc. R. Soc.* **277**, 2049-2057.
- Slocumb, M. E., Regalado, J. M., Yoshizawa, M., Neely, G. G., Masek, P., Gibbs, A. G. and Keene, A. C.** (2015). Enhanced sleep is an evolutionarily adaptive response to starvation stress in *Drosophila*. *PLoS ONE*.
- Sollars, V., Lu, X., Xiao, L., Wang, X., Garfinkel, M. D. and Ruden, D. M.** (2003). Evidence for an epigenetic mechanism by which Hsp90 acts as a capacitor for morphological evolution. *Nat. Genet.* **33**, 70-74.
- Tricker, P. J.** (2015). Transgenerational inheritance or resetting of stress-induced epigenetic modifications: two sides of the same coin. *Frontier. Plant Sci.*
- Trut, L. N.** (1999). Early Canid Domestication: the farm-fox experiment: foxes bred for tamability in a 40-year experiment exhibit remarkable transformations that suggest an interplay between behavioral genetics and development. *Am. Sci.* **87**, 160-169.
- Van Valen, L.** (1962). A study of fluctuating asymmetry. *Evolution* **16**, 125-142.
- Vastenhouw, N. L., Bruntschwig, K., Okihara, K. L., Müller, F., Tijsterman, M. and Plasterk, R. H. A.** (2006). Gene expression: long-term gene silencing by RNAi. *Nature* **442**, 882.
- Vaughn, M. W., Tanurdžić, M., Lippman, Z., Jiang, H., Carrasquillo, R., Rabinowicz, P. D., Dedhia, N., McCombie, W. R., Agier, N., Bulski, A. et al.** (2007). Epigenetic natural variation in *Arabidopsis thaliana*. *PLoS Biol.* **5**, e174.
- Watanabe, T., Tomizawa, S.-I., Mitsuya, K., Totoki, Y., Yamamoto, Y., Kuramochi-Miyagawa, S., Iida, N., Hoki, Y., Murphy, P. J., Toyoda, A. et al.** (2011). Role for piRNAs and noncoding RNA in *de novo* DNA methylation of the imprinted mouse *Rasgrf1* locus. *Science* **332**, 848-852.
- Zhang, Y.-Y., Fischer, M., Colot, V. and Bosse, O.** (2013). Epigenetic variation creates potential for evolution of plant phenotypic plasticity. *New Phytol.* **197**, 314-322.

Table S1. Morphological alterations scored at generation 20. Aberrant phenotypes labelled as “+” were the most representative; aberrant phenotypes labelled as “1” were observed just once.

Aberrant phenotypes		
Phenocopies	Body deformations	Additional traits
⁺ <i>Taxi</i> -like	⁺ Smashed wings	¹ Double veins
⁺ <i>Ebony</i> -like	Thick veins and wing blisters	Wing spots
<i>Vestigial</i> -like	Crooked body (head, thorax, legs)	⁺ Body spots
<i>Apterous</i> -like	⁺ Malformed tergites	Body “warts”
<i>Curly</i> -like	⁺ Scutellar bristles	

Table S2. primer sequences used for PCR and qPCR.

Genes / TEs	Forward	Reverse
<i>rp49</i>	CGG ATC GAT ATG CTA AGC TGT	GCG CTT GTT CGA TCC GTA
<i>piwi</i>	GG ACA GCA GAA CAT CGT GTT GTT TC	GAC CCA TTC CAC TAG CTG C
<i>ago3</i>	GCA AAC TCC CCA CAA ATA TT	GGC AAT GGG TTT TCT AGA TG
<i>su(var)3-9</i>	AGG AAC TTG CAG AAG CAG GA	CTC ACA TGT CGC ACC AGT CT
<i>Hsp26</i>	GTG GAC GAC TCC ATC TTG GT	TCC TTG GAC TTG TCC TCG AC
<i>Hsp27</i>	AAA GAT GGC TTC CAG GTG TG	CCC TTG GGC AGG GTA TAC TT
<i>Hsp68</i>	GGC ACT CAA GGA CGC TAA AAT G	CTG AAC CTT GGG AAT ACG AGT G
<i>Hsp83</i>	ATG CCA GAA GAA GCA GAG ACC	ACT CAT AGC GGA TCT TGT CCA G
<i>tko</i>	CAA CCT GCA AGA GCA CAA CA	AGC AAT GCA TTT GAA CAA CG
<i>zuc</i>	TTT GGC GGA TTC AAT AAA GC	TTG TGC ATC AAG TTC GTG GT
<i>dnmt2</i>	TAC ACC CAT TAC ACC GAG GG	CTT CCC GTG GCG TGA AAT AG
<i>vas</i>	TGT CTG ACG ACT GGG ATG ATG	ATT TCC TCC TTG GTA GCC GC
<i>thor</i>	CAG ATG CCC GAG GTG TAC TC	CAT GAA AGC CCG CTC GTA GA
<i>mod(mdg4)</i>	CCG CAA GAT GTT CAC TCA GA	GAT TCC GCG GTG CTA ATA AA
<i>Hel25E</i>	GAT GAG GAG CAG ACC GAG AC	ACT TGG CCT GAC AGA GGA TG
<i>412</i>	TTG ATG GGC AAA AGA TCC AT	TTG CTG GAA TTG TCG TTT CA
<i>oskar</i>	CGA CAA CGT GAC GGA TTT CCT	GGA GGT GAC CGT TCT TCA GG
<i>adh</i>	AGC AAA AGG GCA CAC AAT TGA	CGG CAC ACA CGG TTT GTT T

Table S3. Aberrant phenotypes (A) and scutellar bristle numbers (B). Aberrant: morphological alterations and phenocopies different from wild-type such as phenotype (A); scutellar bristle number different from four (B).

Aberrant phenotypes							
A) Line	CCRT			ST			
	aberrant	Non aberrant	p-value	aberrant	Non aberrant	p-value	
10.1	Selected	3	27	0.61	1	29	1
	Control	1	29		0	30	
15.4	Selected	1	29	1	0	30	0.49
	Control	0	30		2	28	
6.6	Selected	5	25	1	1	34	1
	Control	4	26		2	33	
outbred	Selected	9	21	0.10	2	28	1
	Control	3	27		1	29	
Scutellar bristle number							
B) Line	CCRT			ST			
	aberrant	Non aberrant	p-value	aberrant	Non aberrant	p-value	
10.1	Selected	0	30	0.24	3	27	1
	Control	3	27		2	28	
15.4	Selected	1	29	1	0	30	0.49
	Control	0	30		2	28	
6.6	Selected	19	11	0.004	10	25	0.61
	Control	7	23		13	22	
outbred	Selected	3	27	*0.10	8	22	0.18
	Control	9	21		3	27	

Table S4. Expression levels as estimated by RT-qPCR for all genes analysed for CCRT and ST.

line	treatment	replicate	412	ago3	dnmt2	Hel25E	Hsp26	Hsp27	Hsp68	Hsp83	modmdg4	piwi	rp49	suvar39	thor	tko	vas	zuc	osk
10.1	select ion	1	2,87E-09	1,93333 E-06	7,85E-09	7,90333 E-07	1,19667 E-05	0,00000 403	6,03333 E-09	0,00000 344	2,92667 E-07	0,00000 0214	1,09667 E-05	4,89667 E-07	0,00000 0208	4,96E-08	0,00000 0182	0,00000 0209	4,54333 E-07
10.1	select ion	2	2,25667 E-09	9,56667 E-07	1,27967 E-08	1,24967 E-06	3,39667 E-06	7,69333 E-07	4,32E-09	0,00000 203	6,50667 E-07	5,66333 E-07	6,95667 E-06	0,00000 135	1,20267 E-06	8,71667 E-08	7,165E-08	1,14667 E-07	3,29333 E-07
10.1	select ion	3	2,355E-09	0,00000 0381	9,60333 E-09	0,00000 0826	2,87667 E-06	1,22167 E-06	3,40667 E-09	3,00333 E-06	1,94333 E-07	0,00000 0237	1,22667 E-05	4,49667 E-07	1,90333 E-07	7,00333 E-08	0,00000 0115	1,09433 E-07	0,00000 195
10.1	control	1	2,08333 E-09	1,73967 E-07	6,99E-09	0,00000 1715	2,13667 E-06	0,00000 0804	2,93E-09	2,20333 E-06	1,455E-07	3,68333 E-07	9,84333 E-06	6,21333 E-07	2,445E-07	1,60333 E-07	9,015E-08	1,03667 E-07	0,00000 0194
10.1	control	2	2,2E-09	8,325E-08	7,19E-09	3,39667 E-07	0,00000 155	4,10333 E-07	3,36E-09	3,82333 E-06	7,37333 E-08	1,13867 E-07	0,00000 2	0,00000 0657	0,00000 0232	1,99333 E-07	2,48333 E-07	5,37667 E-08	3,24667 E-07
10.1	control	3	2,76333 E-09	0,00000 0338	1,263E-08	6,82333 E-07	4,74667 E-06	1,15733 E-06	2,85333 E-09	2,14667 E-06	3,47667 E-07	4,03667 E-07	0,00000 12	6,12333 E-07	2,02667 E-07	1,68667 E-07	1,04033 E-07	1,40667 E-07	0,00000 0289
15.4	select ion	1	1,93667 E-08	5,86667 E-07	1,79333 E-08	1,08767 E-06	6,55667 E-06	0,00000 175	1,61E-06	4,20667 E-06	0,00000 1026	6,96667 E-07	0,00000 42	6,36667 E-07	0,00000 0251	2,44667 E-07	1,65667 E-07	2,92333 E-07	1,09667 E-06
15.4	select ion	2	3,92E-08	4,05333 E-07	1,04867 E-08	0,00000 142	0,00000 438	1,85667 E-06	1,86833 E-08	6,00667 E-06	0,00000 056	0,00000 0352	1,32667 E-05	4,28333 E-07	3,97667 E-07	0,00000 0336	0,00000 0801	1,86667 E-07	0,00000 0843
15.4	select ion	3	3,01E-08	0,00000 0481	1,23933 E-08	0,00000 167	2,28667 E-06	8,64667 E-09	4,75333 E-06	6,44333 E-07	0,00000 04	9,79667 E-06	8,89333 E-07	2,62667 E-07	4,285E-07	4,18333 E-07	2,12667 E-07	5,42667 E-07	
15.4	control	1	2,98333 E-09	9,78333 E-08	1,665E-08	6,54667 E-07	3,99667 E-06	1,98333 E-07	2,9E-09	5,58667 E-07	3,28667 E-07	0,00000 0076	2,90333 E-06	5,80333 E-07	3,16333 E-08	1,32567 E-07	3,945E-08	5,68333 E-08	1,14333 E-07
15.4	control	2	3,20333 E-09	8,13333 E-08	1,316E-08	3,91667 E-07	0,00000 232	2,05333 E-07	3,83333 E-09	1,01933 E-06	0,00000 0292	4,48667 E-08	6,33667 E-06	6,10667 E-07	8,18667 E-08	1,86333 E-07	1,28333 E-07	5,08667 E-08	0,00000 0125
15.4	control	3	2,06667 E-09	2,99667 E-08	4,92333 E-09	0,00000 0576	3,14667 E-06	2,87333 E-07	1,89E-09	3,66333 E-07	5,35667 E-07	NA	3,64667 E-06	0,00000 0345	3,25667 E-08	1,35267 E-07	6,87667 E-08	4,75333 E-08	6,85E-08
6.6	select ion	1	1,91667 E-08	1,94667 E-06	3,66E-08	4,26333 E-07	0,00000 71	2,30333 E-06	6,89E-09	1,98667 E-06	8,68333 E-08	0,00000 0444	1,43333 E-05	0,00000 0204	0,00000 0472	3,13667 E-07	1,75667 E-07	2,09667 E-07	9,37667 E-07
6.6	select ion	2	4,80667 E-09	4,94333 E-07	2,32E-08	8,15333 E-08	2,05667 E-06	0,00000 0602	1,36667 E-09	1,67333 E-07	2,11E-08	1,94667 E-07	8,46667 E-06	1,71233 E-07	1,49667 E-07	9,36E-08	3,44333 E-08	7,19E-08	2,90333 E-07
6.6	select ion	3	6,8E-09	7,49667 E-07	3,51333 E-08	2,50333 E-07	0,00000 287	9,35667 E-07	4,04E-09	0,00000 1543	9,38667 E-08	4,05667 E-07	0,00000 86	3,85667 E-07	0,00000 0258	2,16333 E-07	1,02333 E-07	1,68667 E-07	5,92333 E-07
6.6	control	1	8,91667 E-09	0,00000 284	4,19E-08	5,04333 E-07	8,10333 E-06	9,50333 E-07	4,05667 E-09	0,00000 1299	0,00000 0213	0,00000 051	1,01033 E-05	0,00000 0572	0,00000 0645	1,81667 E-07	1,21967 E-07	1,46333 E-07	6,36667 E-07
6.6	control	2	1,44833 E-08	0,00000 3235	1,88333 E-08	6,43333 E-07	0,00000 602	0,00000 187	7,98E-09	3,19667 E-06	2,54333 E-07	7,82333 E-07	6,73667 E-06	6,70667 E-07	4,01667 E-07	0,00000 0172	0,00000 021	0,00000 024	0,00000 0693
6.6	control	3	1,339E-08	0,00000 2415	2,54E-08	1,41133 E-06	5,73667 E-06	0,00000 186	6,22667 E-09	4,54333 E-06	8,17333 E-07	1,10433 E-06	1,21033 E-05	8,09333 E-07	2,91333 E-07	2,45667 E-07	9,44667 E-07	3,42667 E-07	0,00000 178
out red	select ion	1	1,48933 E-07	1,00767 E-06	4,68333 E-08	2,40333 E-06	7,07667 E-06	2,28667 E-06	2,35667 E-08	6,92667 E-06	3,31333 E-06	8,90667 E-07	1,26333 E-05	7,91333 E-07	3,05333 E-07	0,00000 0609	0,00000 0716	0,00000 0318	0,00000 757
out red	select ion	2	2,47333 E-08	3,70667 E-07	1,88333 E-08	5,71667 E-07	2,75333 E-06	1,03267 E-06	8,64667 E-09	2,30667 E-06	0,00000 0599	0,00000 0391	7,24333 E-06	0,00000 0949	1,43667 E-07	9,75333 E-08	3,01667 E-07	0,00000 0152	2,40333 E-06
out red	select ion	3	3,21E-08	6,91667 E-07	1,97667 E-08	0,00000 224	6,77667 E-06	2,71667 E-06	1,46933 E-08	0,00000 538	7,82333 E-07	1,31333 E-05	1,00567 E-06	0,00000 0181	0,00000 0818	6,90333 E-08	0,00000 1835	3,72333 E-07	0,00000 164
out red	control	1	2,23667 E-08	2,23333 E-07	2,74333 E-08	7,085E-07	0,00000 42	1,83667 E-06	1,24333 E-08	0,00000 573	6,67667 E-07	3,84667 E-07	1,33333 E-05	0,00000 0726	9,71667 E-07	0,00000 0227	0,00000 027	2,30333 E-07	1,31667 E-06
out red	control	2	1,99667 E-08	3,03667 E-07	1,337E-08	0,00000 1381	4,07333 E-06	1,98533 E-06	2,95E-09	0,00000 3275	0,00000 0833	7,555E-07	0,00000 903	0,00000 1252	5,895E-07	1,15667 E-07	1,04267 E-06	0,00000 0208	9,57333 E-07
out red	control	3	1,15567 E-08	3,46333 E-07	1,69E-08	6,41667 E-07	2,97333 E-06	7,75667 E-07	5,03333 E-09	3,54333 E-06	0,00000 0486	2,23333 E-07	9,46667 E-06	6,785E-07	0,00000 0526	8,15667 E-08	0,00000 0322	9,10667 E-08	7,33333 E-07

CCRT

ST

line	treatment	replicate	412	ago3	dnmt2	Hel25E	Hsp26	Hsp27	Hsp68	Hsp83	modmdg4	piwi	rp49	suvar39	thor	tko	vas	zuc	osk
10.1	select ion	1	3,095E-10	5,885E-07	8,28E-09	0,00000 0488	0,00000 769	0,00000 07	7,905E-09	0,00000 1335	0,00000 1122	3,555E-07	0,00000 462	0,00000 0169	5,755E-08	4,175E-07	1,8685E-07	0,00000 -07	0,00000 0165
10.1	select ion	2	6,465E-10	4,045E-07	1,0125 E-08	0,00000 0589	0,00000 51	0,00000 105	8,38E-09	0,00000 4855	1,0225E-06	2,835E-07	3,16217 E-06	1,615E-07	6,245E-08	0,00000 0462	3,575E-07	0,00000 0289	0,00000 1008
15.4	select ion	1	1,04E-08	0,00000 0776	8,445E-09	9,385E-07	0,00000 501	9,565E-07	1,3625 E-08	0,00000 588	0,00000 1385	0,00000 0599	0,00000 749	0,00000 0431	1,7105E-07	2,105E-07	3,995E-07	3,285E-07	0,00000 1235
15.4	select ion	2	0,00000 0018	7,035E-07	8,525E-09	0,00000 124	0,00000 3335	0,00000 07	8,895E-08	0,00000 414	0,00000 1553	1,1565E-06	0,00000 6085	NA	9,895E-08	0,00000 0161	0,00000 2395	0,00000 0238	0,00000 333
6.6	select ion	1	1,79E-09	0,00000 0256	2,535E-08	0,00000 0863	0,00000 077	0,00000 0855	6,78E-09	0,00000 385	0,00000 0976	0,00000 033	0,00000 7285	0,00000 0164	1,0335E-07	3,075E-07	2,085E-07	0,00000 07	0,00000 0145
6.6	select ion	2	1,75E-09	4,295E-07	6,04E-09	0,00000 0504	0,00000 441	5,245E-07	5,285E-09	0,00000 244	0,00000 0793	0,00000 0337	0,00000 2905	2,4455E-07	8,76E-08	0,00000 0198	8,79E-08	0,00000 08	0,00000 0197
6.6	select ion	3	9,685E-09	0,00000 1435	1,92E-08	7,995E-07	0,00000 3965	0,00000 0958	4,69E-09	0,00000 51	0,00000 194	0,00000 0807	0,00000 528	0,00000 1045	5,83E-08	2,985E-07	6,695E-07	3,015E-07	0,00000 1135
out red	select ion	1	1,86E-08	1,0735E-06	1,945E-08	0,00000 17	0,0002 335	8,855E-07	1,531E-08	0,00000 405	0,00000 1147	0,00000 0338	0,00000 401	0,00000 0605	1,0245E-07	0,00000 0166	1,2185E-06	0,00000 -06	0,00000 0255
out red	select ion	2	3,48E-08	0,00000 032	2,445E-08	5,685E-07	0,00000 777	0,00000 112	5,63E-08	0,00000 336	0,00000 0232	3,62333 E-07	0,00000 456	0,00000 0263	2,04333 E-07	2,08667 E-07	9,01667 E-08	0,00000 0164	9,59667 E-07
out red	select ion	3	1,0115E-09	0,00000 0306	1,0225 E-08	0,00000 1065	0,00000 797	1,38333 E-06	6,48E-09	7,25667 E-06	0,00000 078	4,73667 E-07	0,00000 336	5,36667 E-07	0,00000 0308	3,13667 E-07	0,00000 1085	0,00000 0167	1,37133 E-06
out red	control	1	6,11333 E-10	2,78667 E-07	4,86E-09	1,25333 E-06	0,00000 834	7,45333 E-07	5,16667 E-06	6,11667 E-06	7,12333 E-07	4,42333 E-07	0,00000 687	9,53667 E-07	0,00000 0157	2,59667 E-07	2,59333 E-07	2,07333 E-07	5,50333 E-07
out red	control	2	2,76667 E-08	9,16667 E-07	1,41E-08	0,00000 302	1,23333 E-05	1,11333 E-06	1,53E-06	0,00001 036	0,00000 08	6,12333 E-07	1,16233 E-05	0,00000 0573	2,07333 E-07	4,05333 E-07	0,00000 0679	0,00000 0346	1,03733 E-06
out red	control	3	1,307E-08	3,53667 E-07	1,47667 E-08	1,21933 E-06	0,00000 872	9,76667 E-07	1,66333 E-08	0,00000 393	9,04333 E-07	2,55333 E-07	3,88333 E-06	0,00000 0691	1,241E-07	0,00000 0377	6,29333 E-07	2,19333 E-07	5,22667 E-07
15.4	control	1	1,36333 E-08	0,00000 0313	2,14933 E-08	1,38133 E-06	0,00000 769												