

## Preferred viewing directions of bumblebees (*Bombus terrestris* L.) when learning and approaching their nest site

Natalie Hempel de Ibarra, Andrew Philippides, Olena Riabinina and Thomas S. Collett

10.1242/jeb.039388

There was an error published in *J. Exp. Biol.* **212**, 3193-3204.

The wrong version of Fig. 10 was published. The correct version is printed below.

We apologise to authors and readers for this error.

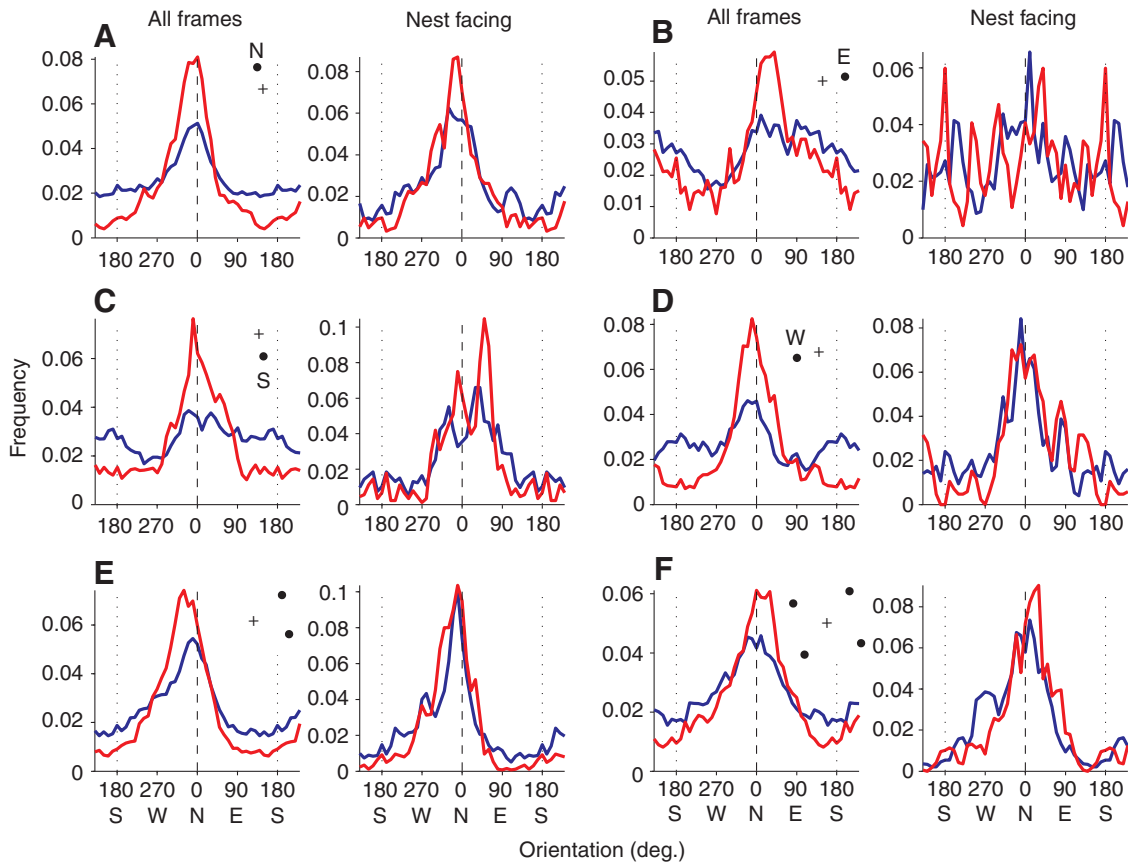


Fig. 10. Bumblebees' facing orientation in the garden with different arrangements of cylinders. (A–D) One cylinder is placed 8 cm and just west of north or east or south or west. (E,F) Two or four cylinders placed 20 cm from the nest. Left panel of each column: distribution of body orientations pooled over all frames of learning and return flights. Right panel: distribution of frames in which the bee faced within 10 deg. of the nest hole. Numbers of flights are given in Tables 1 and 2. See Fig. 4 for further details. Bees' peak facing orientation in both learning and return flights is by-and-large to the north for all the landmark configurations shown in this figure.